

# CONDUCTIVE-PLASTIC HOLLOW SHAFT SENSOR PGL 60



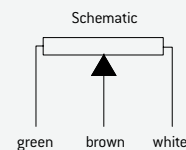
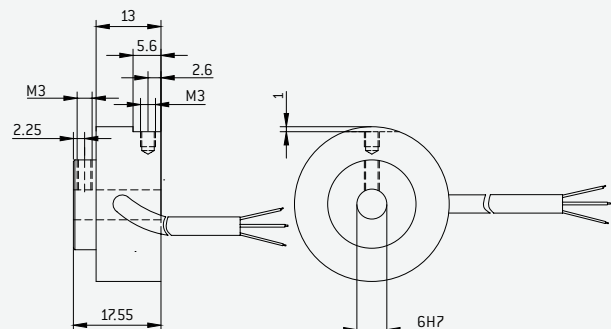
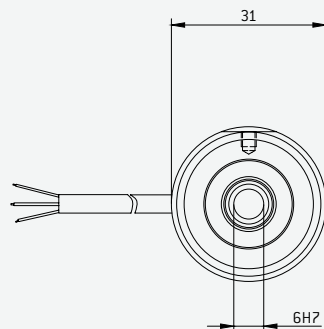
Extremely robust, with good linearity, excellent resolution and repeatability: These are the defining characteristics of the Metallux conductive plastic hollow shaft precision potentiometer PGL 60.

## FEATURES

- Hollow shaft
- Extremely robust
- Extremely good linearity
- Excellent resolution and repeatability

## APPLICATIONS

- Axis position sensing in robotics
- Steering angle measurement on special vehicles
- Servo systems



## ELECTRICAL SPECIFICATIONS

Resistance range (R <sub>n</sub> )	10 kΩ *
Resistance tolerance	± 20%
Electrical angle	up to 320° *
Independent linearity	± 2%
Maximum wiper current	5 mA in case of malfunction
Wiper load	> 100 x R <sub>n</sub>
Insulation resistance	10 GΩ at 500 VDC
Dielectric strength	1000 VAC

Mechanical and electrical characteristics are customizable. Specifications are subject to change without notice. \* Others on request.

## MECHANICAL SPECIFICATIONS

Lifetime	10 million cycles
Mechanical positioning range	360° continuous rotation
Protection class	IP 63
Bearings	Ball bearing

## AMBIENT CONDITIONS

Operating temperature	− 25°C ... +85°C
-----------------------	------------------

## MATERIAL

Housing	Anodised aluminium
Electrical connectors	Cable 1 m stripped and tinned

## SAMPLE ORDER

Part no.	Type series	Resistance range	Elect. measuring range	Elect. connection	Protection class
H060502320	PGL 60	10 K	320° *	Cable connection	IP 63